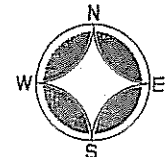
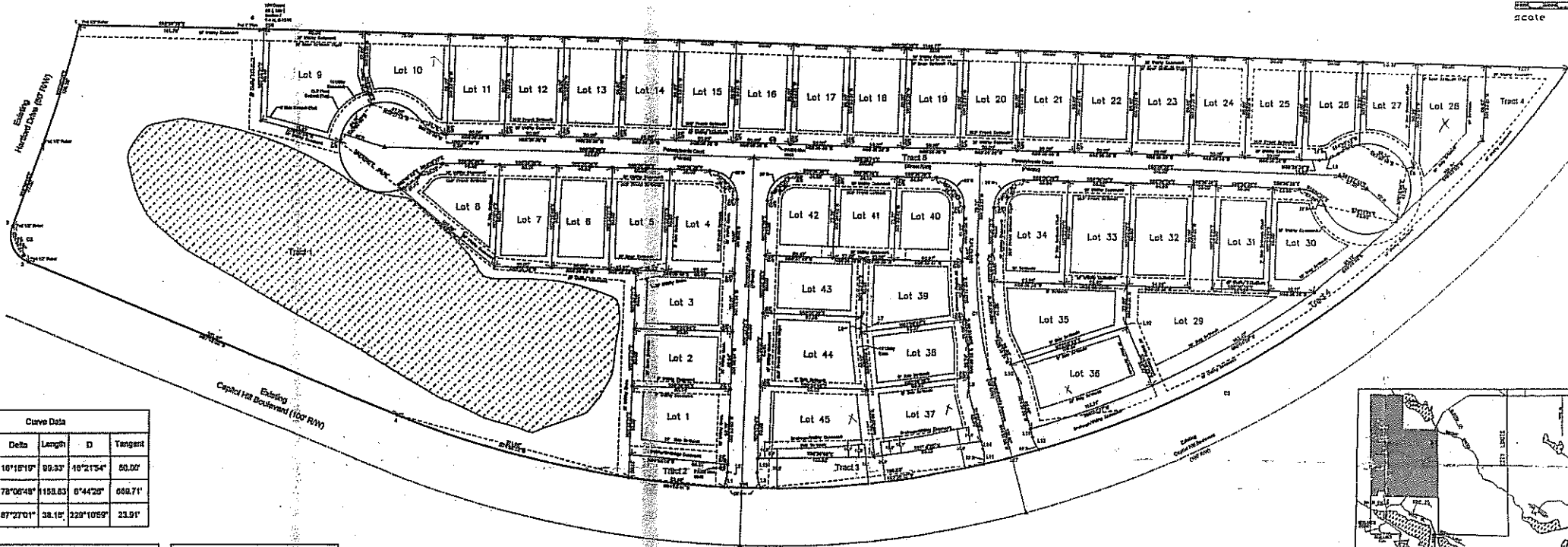


H 773
2006053240

As of 6/2/06



50 0 50 100
scale 1"=50' Feet

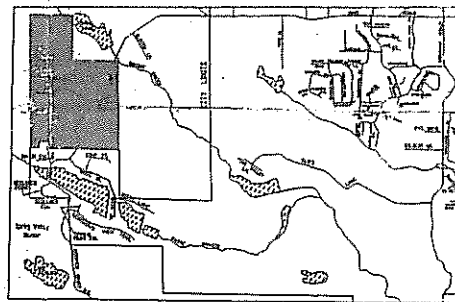


LEGEND
 O SET MONUMENTS (IF PLUMBED OR FINISHED)
 A FOUND MONUMENTS (AS SHOWN)
 B PROPOSED MONUMENTS

Curve Data				
Curve	Radius	Delta	Length	Tangent
C1	350.11'	10°11'17"	99.37'	10°21'54"
C2	850.00'	78°06'48"	1153.83'	6°44'29"
C3	25.00'	87°27'01"	38.18'	22°10'59"

Line Data		
Line	Bearing	Distance
1	N 88°36'39" E	1145.77
2	S 78°06'48" E	1153.83
3	S 87°27'01" E	38.18
4	N 10°21'54" E	99.37
5	N 10°20'08" E	109.78
6	N 19°39'15" E	77.02
7	N 16°26'08" E	101.70
8	N 16°26'08" E	101.70
9	N 16°26'08" E	101.70
10	N 16°26'08" E	101.70
11	N 16°26'08" E	101.70
12	N 16°26'08" E	101.70
13	N 16°26'08" E	101.70
14	N 16°26'08" E	101.70
15	N 16°26'08" E	101.70
16	N 16°26'08" E	101.70
17	N 16°26'08" E	101.70
18	N 16°26'08" E	101.70
19	N 16°26'08" E	101.70
20	N 16°26'08" E	101.70
21	N 16°26'08" E	101.70
22	N 16°26'08" E	101.70
23	N 16°26'08" E	101.70
24	N 16°26'08" E	101.70
25	N 16°26'08" E	101.70
26	N 16°26'08" E	101.70
27	N 16°26'08" E	101.70
28	N 16°26'08" E	101.70
29	N 16°26'08" E	101.70
30	N 16°26'08" E	101.70
31	N 16°26'08" E	101.70
32	N 16°26'08" E	101.70
33	N 16°26'08" E	101.70
34	N 16°26'08" E	101.70
35	N 16°26'08" E	101.70
36	N 16°26'08" E	101.70
37	N 16°26'08" E	101.70
38	N 16°26'08" E	101.70
39	N 16°26'08" E	101.70
40	N 16°26'08" E	101.70
41	N 16°26'08" E	101.70
42	N 16°26'08" E	101.70
43	N 16°26'08" E	101.70
44	N 16°26'08" E	101.70
45	N 16°26'08" E	101.70

FAGIS Coordinates		
Point	Northing	Easting
1	148643.2700	1179207.9500
2	148466.4402	1179180.9830
3	148433.8848	1179165.0808
4	148300.9233	1179090.9042
5	148811.5800	1180916.0300
6	148639.3500	1179368.5000



Legal Description

Part of the South 1/4, NW 1/4, Section 7, Township 1 North, Range 13 West, City of Little Rock, Pulaski County, Arkansas, more particularly described as follows:

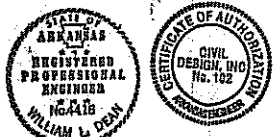
Beginning at the NW corner of the SE 1/4, NW 1/4, Section 7, Township 1 North, Range 13 West, Pulaski County, City of Little Rock, Arkansas; thence South 88°36'39" East for a distance of 1145.77 feet to a point on a curve on the north right-of-way line of Capitol Hill Boulevard (said curve being concave to the North and having a radius of 850.00 feet and a central angle of 78°06'48"); thence along said north right-of-way line along a curve to the right southwesterly and westerly a distance of 1153.84 feet (said curve having a chord bearing of South 73°08'34" West and a distance of 1071.15 feet); thence continue along said north right-of-way North 07°48'02" West a distance of 351.91 feet to the beginning of a curve (said curve being concave to the Northeast and having a radius of 25.00 feet and a central angle of 87°27'10"); thence northwesterly along said curve a distance of 38.18 feet to a point on the east right-of-way of Hartford Drive; thence along said east right-of-way North 19°39'15" East for a distance of 77.02 feet; thence continue along said east right-of-way North 16°26'08" East for a distance of 109.78 feet; thence South 88°36'38" East a distance of 101.70 feet to this Point of Beginning, containing 9.120 ACRES, more or less.

H 773
2006053240

CERTIFICATE OF ENGINEERING ACCURACY

I, William L. Dean, hereby certify that this plat correctly represents a plan made by me, and that the engineering requirements of the Little Rock Subdivision Rules and Regulations have been complied with.

07/10/06
Date of Execution
 William L. Dean
 Registered Professional Engineer
 No. 4410, Arkansas



CERTIFICATE OF SURVEYING ACCURACY

I, Jeffrey J. West, hereby certify that this plat correctly represents a boundary survey made or verified by me, all monuments required actually exist and are correctly shown hereon and that all surveying requirements of the Little Rock Subdivision Rules and Regulations have been complied with.

7-10-06
Date of Execution
 Jeffrey J. West
 Registered Professional Surveyor
 Land Surveyor No. 1498, Arkansas



I have consulted FEMA Flood Insurance Maps and find that the hereon property described is NOT in a 100-year flood zone.

Jeffrey J. West
 Registered Land Surveyor
 No. 1498, Arkansas

Certificate of Owner

We, the undersigned, owners of the real estate shown and described herein, do hereby certify that we have laid off, platted and subdivided, and do hereby lay off, plat and subdivide said real estate in accordance with this plat.

07/10/06
Date of Execution
 Family Builders, LLC
 P.O. Box 13258
 Maumelle, Arkansas 72113

Source of Title: 48-5702, Book E, Page 537

CERTIFICATE OF FINAL APPROVAL

Pursuant to the Little Rock Subdivision Rules and Regulations, and all of the conditions of approval having been completed, this document is hereby accepted. This certificate is hereby executed under the authority of said rules and regulations.

7/10/06
Date of Execution
 Little Rock Planning Commission

CERTIFICATE OF RECORDING

This document, number 20060, filed for record on July 20, 2006, in Plat Book 44, Page 775.

PAT O'BRIEN, Circuit Clerk & Recorder

General Notes

- 3/8" IRON PINS WERE SET AT ALL LOT CORNERS WITH CAPS
- ALL EASEMENTS SHOWN ARE TO BE USED FOR DRAINAGE AND/OR UTILITIES UNLESS OTHERWISE NOTED
- LOTS WITH ROUNDED CORNERS ARE MEASURED TO A POINT OF INTERSECTION OF LOT LINES AND NOT POINTS ON A CURVE
- DISTANCES SHOWN ALONG CURVES ARE CHORD DISTANCES
- ERROR OF CLOSURE: GREATER THAN 1:10,000
- ALL STREETS ARE PRIVATE BUT ARE FOR THE USE AND BENEFIT OF ALL LOTS IN THE SUBDIVISION
- FRONT LOT PINS OF ALL LOTS ARE AT THE BACK OF CURB & OFFSETS, IF ANY, ARE AS SHOWN AND WILL BE ALONG LOT LINES.
- A DRAINAGE IS PRIVATE BUT IS FOR THE USE AND BENEFIT OF ALL LOTS IN THE SUBDIVISION

Revised Final Plat
 Lots 1 - 45
 Governor's Manor - PRD

An Addition to the City of Little Rock, Arkansas

Revised July 6, 2005

Date: June 2, 2006

Owner of Record: Family Builders, LLC
 P.O. Box 13258
 Maumelle, Arkansas 72113

Drawn By: J. Driener
 Designed By: J. Driener
 Checked By: W.L. Dean
 Approved By: W.L. Dean

CIVIL DESIGN, INC.

1301 CARROLL ROAD, LITTLE ROCK, ARKANSAS 72112 (501) 465-7717